

**NORTHERN GOLDFISH  
& PONDKEEPERS  
SOCIETY**  
*A Nationwide Society*  
**NEWSLETTER**



**JUNE 2020**

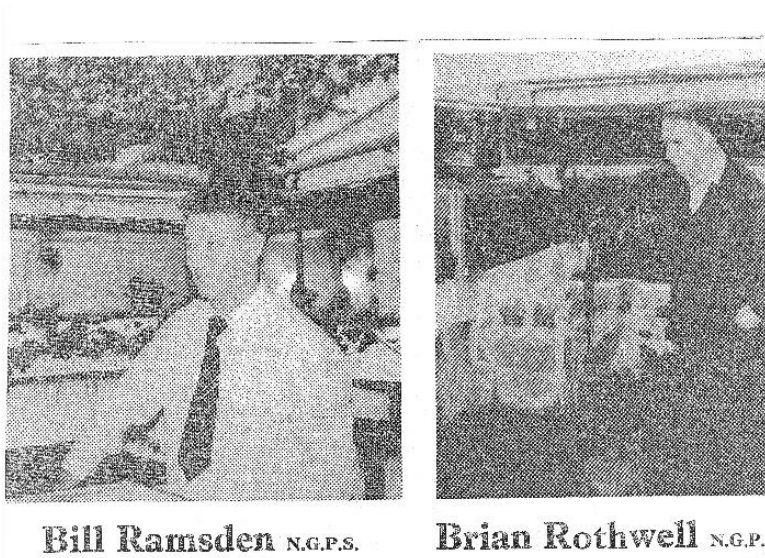


**A Gold Car  
A Gold Fish?**

## **Members' write**

Reading last month's Newsletter, our President, Bill Ramsden, wrote: "The Chairman's article about the Common Goldfish was interesting but there is a fact that needs comment. When the Common's colour was discussed by the

original Goldfish Clubs (mainly GSGB) last century, it was decided that the ideal colour should be – overall red. A ‘Pillar-box’ red too. Back in the ‘60s myself and Brian Rothwell found Commons with this overall colour at Dave’s Aquarium, Bolton, in a special shipment from Italy. We bought pairs and jointly line-bred them. We won many Firsts, even Best in Shows in the Common Goldfish Class.”



A photo of Bill and Brian taken from a copy of Aquarist & Pondkeeper, May

1981, that described how they organised the very first NGPS Goldfish Show.

It will be published in a future Newsletter.

## **Aquatic News**

Wearable electronics mean a skin tattoo can display changing colours or even a video! A Chinese University (Nanjing) has developed a film made of gelatin extracted from fish scales, in which mini-LEDs can be added. But the main advantage is that it is biodegradable (within 24 days in soil) so look for 'fish scale electronics' in the future, instead of the tons of electronic waste now landfilled, forever.

## Goldfish News

On official Social Media News in the US & Canada, the following message was posted in May....

“In many parts of North America, goldfish have no known predators and can quickly overwhelm an ecosystem.

Discarded goldfish have been known to grow to the size of a football or larger.

They start out small in a household tank but can balloon in size under the right conditions.

They do most of their growing -- and cause the most damage -- during the summer months.

According to Ontario's Invading Awareness Program, the fish stir up mud and debris when they feed, resulting in cloudiness that can have a negative impact on aquatic plants”.

On the same site officials in both Canada

and the U.S. also repeated warnings not to flush their pet goldfish, because they could have diseases or parasites that could be introduced into waterways -- this is especially true in communities where water treatment systems are lacking.

## **Pond News**

This is downtown Bangkok, Thailand where there is an abandoned skyscraper called Sathorn Unique Tower. Yes, it caught fire....



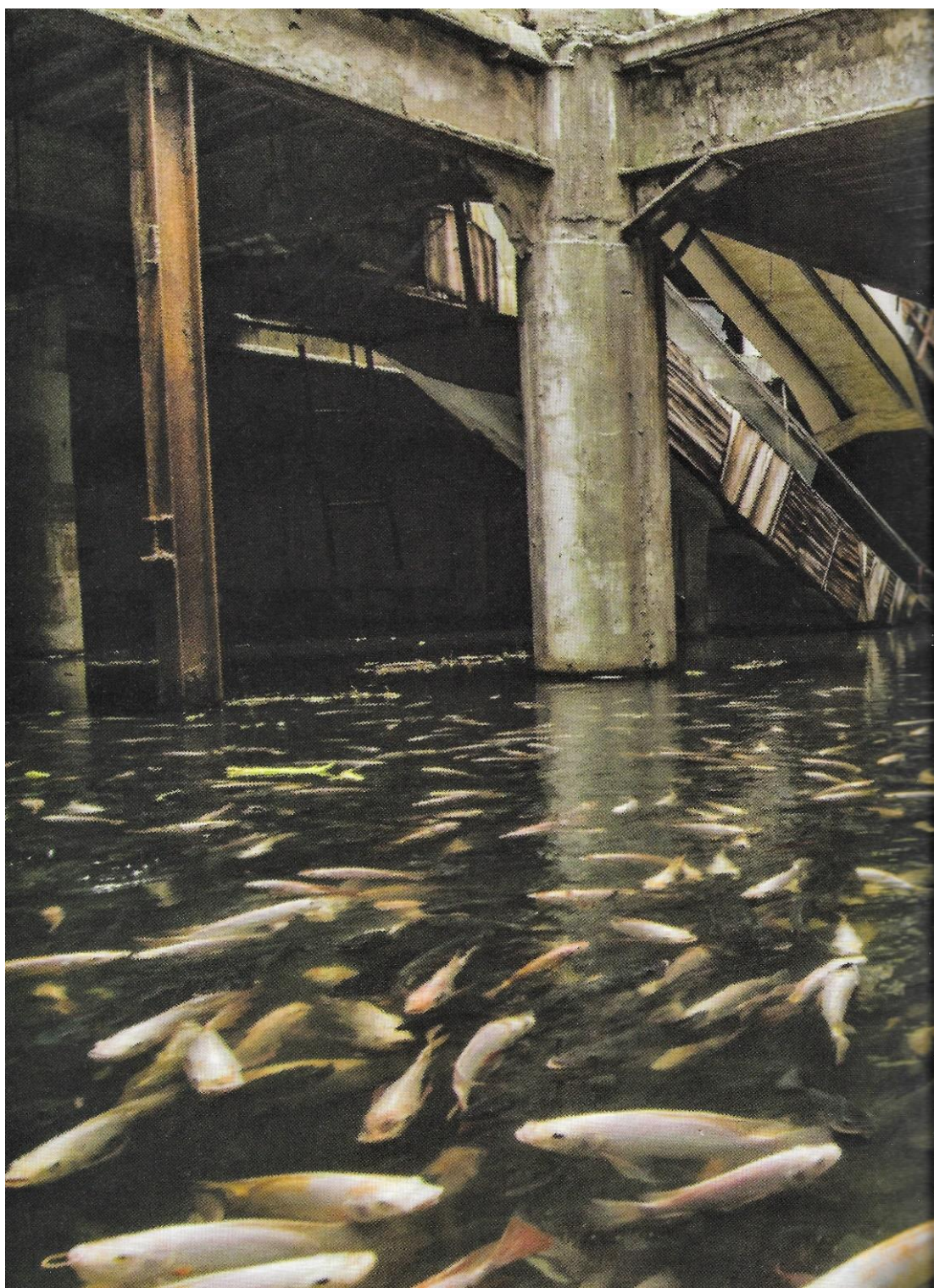
It was built back in the 1990s, but financial problems meant it was never completed. The building became derelict and is now an inaccessible ruin.

Over the years the basement filled with rainwater and it became a problem with mosquito infestation. So someone added a few Koi and Tilapia. The Koi have thrived and it is now filled with generations of colourless Koi, probably due to the place being in darkness.

Redevelopment is now underway – but first they need to move thousands of giant Tilapia and Koi!

See them next page.....





## Monthly Top Tips

Here is a good one from member Ian Mildon – it first appeared in the Bristol AS Newsletter with typical Ian's humour, mocking Corid-19....

**Clean, Oxygenated, cheap on Value to  
Ian's Design 20 (as 2020)**

By Ian Mildon

A few years ago Dave Meaden said at one of the BAS meetings that if you had a good air supply you should use a sponge filter driven by the air supply instead of just an airstone, even if you have another type of internal or external filter. 'No brainer' he called it.

He introduced us to a sponge filter that sits on the bottom of the tank. See Figure 1.





Figure 1

He offered to purchase these via the internet to those in attendance - I had five.

I also had several sponge filters from an earlier date, that stick on the glass, see Figure 2....



Figure 2

Sponge filters are great for young fry as they do not get sucked in and it also gives them a larder to browse on.

As with most things, these filters or the sponge has a limited life, albeit several years, and the sponge either becomes totally

clogged or breaks up; either way you are left with the plastic pipe work.

My original sponge filters in Figure 2, have reached this stage. I also have had to dispose of a couple of my canister filters as the outer insulation on the cable has split, where it enters the motor unit, making me several filters down.

Do I run down to the shop and get replacements? No, they are closed. I could order online but I am not fully up and running with purchases from the Internet.

What can be done?

I looked around the garage and shed and I found several seed trays, Figure 3, plastic mesh, Figure 4, a sheet of filter foam, Figure 5, plus some cable ties





Figure 3

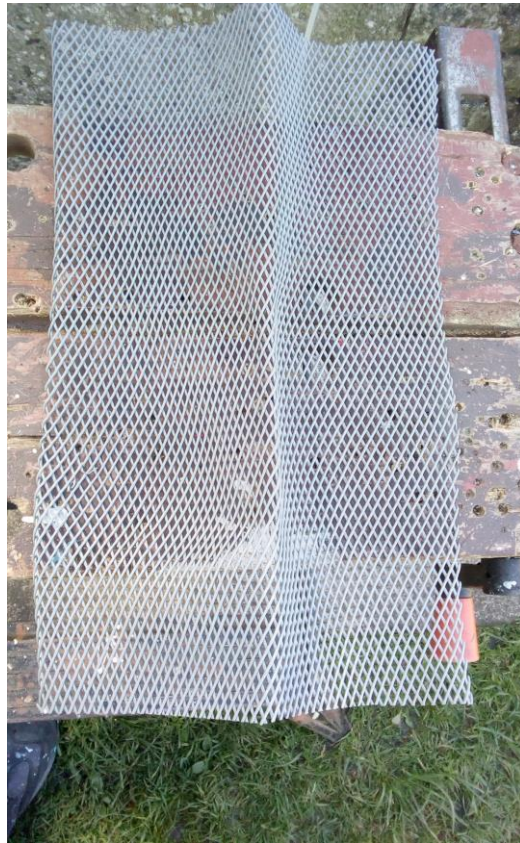


Figure 4



Figure 5



Figure 6



The seed tray will sit across the top of most tanks, if it is a wide tank a garden cane or any suitable type of rod could be secured to either side of the seed tray to act as a bridge, to sit across the tank.

To secure the uplift pipe from the old sponge filter to the side of the seed tray, drill a couple of holes in the side of the seed tray and cable tie the uplift pipe into position, a spacer may be required to keep the uplift pipe vertical, Figure 6. Before doing this, cut off the lugs that go into the rubber suckers and file the stub smooth, this will make the uplift safer for the fish.

Cut the plastic mesh to fit into the seed tray and layer to about ½ inch (12mm) this will give somewhere for bacterial growth: other media could be used. Cut filter foam to fit

into seed tray, stand across top of tank and connect airline.



Figure 7

(The piece of Lead is only in position because the plastic mesh needs to flatten out.)

The only down-side is this filter is not suitable for young fry.

It is easy to clean, just lift the foam out of the seed tray and rinse.

On starting the filter I realised that the water from the uplift pipe did not flow far enough onto the filter foam. This was easily rectified by adding the T-piece from the filter pipe-work to the outlet of the uplift pipe.

I tested the flow rate, it took 45 seconds to fill a pint glass, which equates to nearly 10 gallons an hour.

Ed: This is ideal for mechanical and biological filtration, well worth adding to your fish house aquaria.

---

## **Notes from the Chairman's Fish House**

We were very sorry to hear of the death of Brian Bates last month. Brian had been ill for a long time and had recently sold off his respected line of London Shubunkins, knowing he would not be

able to keep them. An excellent Breeder with many BAS awards, Brian will be sadly missed.

Unless there is a miraculous cure for Coronavirus before September, the club's annual show will not take place.

But we can still hold our normal photographic classes. Full details in the July Newsletter. Stay safe, Sherridan.

